

Patient Randomization #

Site

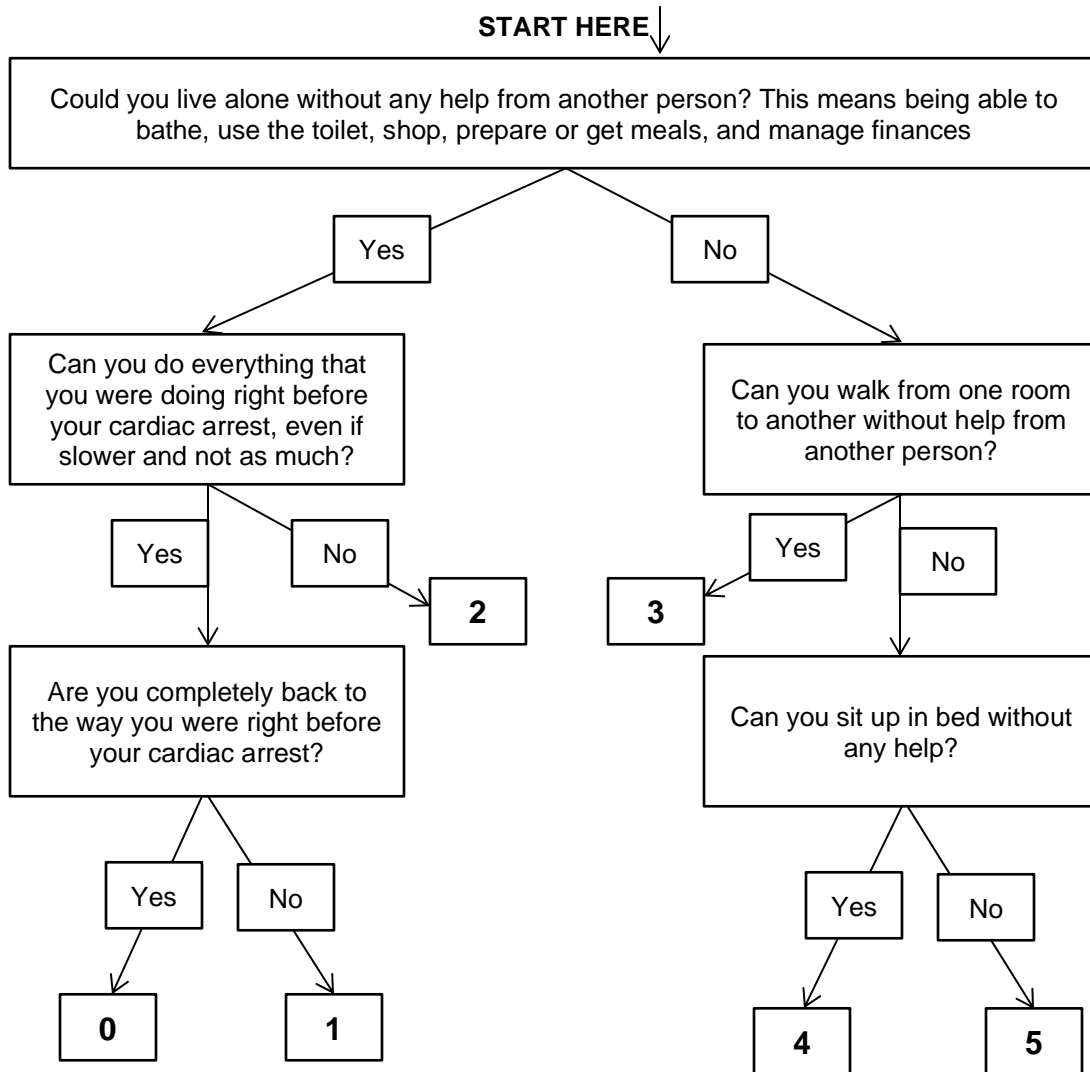
Date (dd/mm/yyyy)

Modified Rankin Scale

Interviewer:

The following figure is intended to aid in the scoring of the Modified Rankin Scale (MRS). Beginning at the top of the figure at the first question, work your way down until you end up on a number. The first question each patient should be asked is, "Could you live alone without any help from another person?" Depending on the patient's response, follow the response choice of "yes" or "no" to the next question. When you reach a number, this will signal the end of the questions and the number will correspond to the patient's MRS score. Note: if a patient does not understand the term 'cardiac arrest', feel free to explain it in other words such as, "a collapse and loss of consciousness episode that landed you in the hospital."

This figure is adapted from the Bruno A, et al. 2011. The complete citation is as follows: Bruno, A., A. E. Akinwuntan, C. Lin, B. Close, K. Davis, V. Baute, T. Aryal, D. Brooks, D. C. Hess, J. A. Switzer, and F. T. Nichols. 2011. "Simplified modified rankin scale questionnaire: reproducibility over the telephone and validation with quality of life." Stroke 42 (8):2276-9.



Patient Randomization #

Site

Date (dd/mm/yyyy)

For your information, the Modified Rankin Scale (MRS) is as follows:

| Symptoms | Score |
|---|-------|
| No symptoms at all | 0 |
| No significant disability despite symptoms; able to carry out all usual duties and activities | 1 |
| Slight disability; unable to carry out all previous activities, but able to look after own affairs without assistance | 2 |
| Moderate disability; requiring some help, but able to walk without assistance | 3 |
| Moderately severe disability; unable to walk and attend to bodily needs without assistance | 4 |
| Severe disability; bedridden, incontinent and requiring constant nursing care and attention | 5 |
| Dead | 6 |

Patient MRS Score (indicate in box below):

Details (if applicable):